



Australian Stock Horse

FOUNDATION MARES

Registered Australian Stock Horse Mares registered in the first ten years
(Registration Numbers 1 – 65,000) with over 500 registered Australian Stock Horse
descendants within 5 generations.

AMBER PRINCESS - 9262

BROWN

Sire: unknown sire
Dam: unknown dam

Reference: Australian Stock Horse Journal May/June 2004 - Page 24
http://abri.une.edu.au/online/images/ASHS/9262_1.pdf



ARCADIA JINGLES - 2681

GREY

Sire: gold rock 02
Dam: nizami mare 02

Reference:
Article to be collated

PHOTOGRAPH
NOT
AVAILABLE

BARONA AMY - 13138

DUN

Sire: sea craft 02
Dam: palis 02

Reference: Australian Stock Horse Journal Mar/Apr 2011 - Page 10
http://abri.une.edu.au/online/images/ASHS/13138_1.pdf

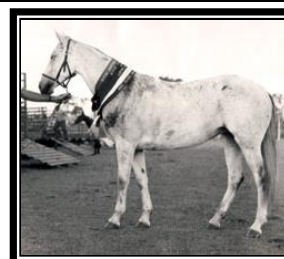
PHOTOGRAPH
NOT
AVAILABLE

BARRETTS CREEK BETTY - 3548

GREY

Sire: unknown sire
Dam: unknown dam

Reference: Australian Stock Horse Journal July/Aug 2012 - Page 12
http://abri.une.edu.au/online/images/ASHS/3548_1.pdf

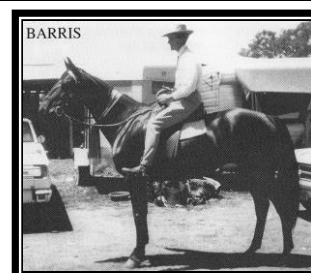


BARRIS - 1711

BROWN

Sire: bar eye 03
Dam: society 02

Reference: Australian Stock Horse Journal May/June 2011 - Page 10
http://abri.une.edu.au/online/images/ASHS/1711_1.pdf





Australian Stock Horse

FOUNDATION MARES

Registered Australian Stock Horse Mares registered in the first ten years
(Registration Numbers 1 – 65,000) with over 500 registered Australian Stock Horse
descendants within 5 generations.

BATES SECRET - 4800

GREY

Sire: wandobah 001
Dam: bobbie bruce mare 02

Reference:
Article to be collated

PHOTOGRAPH
NOT
AVAILABLE

BAWNDUGGIE BLUEBIRD II - 2293

GREY

Sire: sharlite 02
Dam: bluebird i 02

Reference:
Article to be collated

PHOTOGRAPH
NOT
AVAILABLE

BEAULEIGH REDWINGS - 17004

CHESTNUT

Sire: unknown sire
Dam: unknown dam

Reference:
Article to be collated

PHOTOGRAPH
NOT
AVAILABLE

BELLTREES CINDERS - 892

CHESTNUT

Sire: klimop 02
Dam: flame 06

Reference: Australian Stock Horse Journal July/Aug 2013 - Page 20
http://abri.une.edu.au/online/images/ASHS/892_1.pdf

PHOTOGRAPH
NOT
AVAILABLE

BLACK BESS - 370

BLACK

Sire: bronzone 02
Dam: unknown dam

Reference: Australian Stock Horse Journal Jan/Feb 2013 - Page 16
http://abri.une.edu.au/online/images/ASHS/370_1.pdf

PHOTOGRAPH
NOT
AVAILABLE



Australian Stock Horse

FOUNDATION MARES

Registered Australian Stock Horse Mares registered in the first ten years
(Registration Numbers 1 – 65,000) with over 500 registered Australian Stock Horse
descendants within 5 generations.

BOBBY THREEPENCE - 1911

BAY
Sire: bobbie bruce 02
Dam: dainty 01
Reference:
Article to be collated

PHOTOGRAPH
NOT
AVAILABLE

BORAH WANITA - 2723

CHESTNUT
Sire: brooker horse 02
Dam: gypsy 07
Reference:
Article to be collated

PHOTOGRAPH
NOT
AVAILABLE

BOWER BIRD YELLOW LONG - 6222

BAY
Sire: mr smokey 02
Dam: unknown dam
Reference:
Article to be collated

PHOTOGRAPH
NOT
AVAILABLE

BOXHURST BELLBIRD - 12526

BROWN
Sire: the bell boy 02
Dam: bess 07
Reference:
Article to be collated

PHOTOGRAPH
NOT
AVAILABLE

BOXHURST FIREFLY - 612

BROWN
Sire: parisian beau 02
Dam: val ray 02
Reference:
Article to be collated

PHOTOGRAPH
NOT
AVAILABLE



Australian Stock Horse

FOUNDATION MARES

Registered Australian Stock Horse Mares registered in the first ten years
(Registration Numbers 1 – 65,000) with over 500 registered Australian Stock Horse
descendants within 5 generations.

BRIGHTON BAY BAY LADY - 36432

BAY
Sire: sovereign 10
Dam: sandra 03
Reference:
Article to be collated

PHOTOGRAPH
NOT
AVAILABLE

BROWN SECRET - 7177

BROWN
Sire: JOHNSTONS DARK SECRET
Dam: sateen 02
Reference:
Article to be collated

PHOTOGRAPH
NOT
AVAILABLE

CARDONIS BREEZE - 4755

BAY
Sire: JUST FRED
Dam: rosewood mare 01
Reference:
Article to be collated

PHOTOGRAPH
NOT
AVAILABLE

CHAN SUE - 1901

BROWN
Sire: chan 02
Dam: glengarry station mare 01

Reference: Australian Stock Horse Journal Nov/Dec 2013 - Page 16
http://abri.une.edu.au/online/images/ASHS/1901_1.pdf

PHOTOGRAPH
NOT
AVAILABLE

CHERRY - 1560

BAY
Sire: mr cherry 001
Dam: gurley 01
Reference:
Article to be collated

PHOTOGRAPH
NOT
AVAILABLE



Australian Stock Horse

FOUNDATION MARES

Registered Australian Stock Horse Mares registered in the first ten years
(Registration Numbers 1 – 65,000) with over 500 registered Australian Stock Horse
descendants within 5 generations.

CINDERS MELODY - 18952

BROWN

Sire: CLARKES DAYLIGHT
Dam: cinders 02

Reference: Australian Stock Horse Journal May/June 2012 - Page 10
http://abri.une.edu.au/online/images/ASHS/18952_1.pdf



COLONY KATHLEEN - 25679

BAY

Sire: chan 02
Dam: dell 03

Reference: Australian Stock Horse Journal Mar/Apr 2014 - Page 16
http://abri.une.edu.au/online/images/ASHS/25679_1.pdf



COMARA AMARETTE - 2650

BAY

Sire: red race 02
Dam: society 02

Reference: Australian Stock Horse Journal Jan/Feb 2011 - Page 10
http://abri.une.edu.au/online/images/ASHS/2650_1.pdf

PHOTOGRAPH
NOT
AVAILABLE

COMARA BLONDIE - 357

BLACK

Sire: tomahawk 02
Dam: benghazi mare 02

Reference:
Article to be collated

PHOTOGRAPH
NOT
AVAILABLE

COMARA PRINCESS - 358

BAY

Sire: bulga boy 02
Dam: unknown dam

Reference: Australian Stock Horse Journal Mar/Apr 2001 - Page 34
http://abri.une.edu.au/online/images/ASHS/358_1.pdf





Australian Stock Horse

FOUNDATION MARES

Registered Australian Stock Horse Mares registered in the first ten years
(Registration Numbers 1 – 65,000) with over 500 registered Australian Stock Horse
descendants within 5 generations.

CONGI MARGO - 8275

BROWN

Sire: espionage 02

Dam: susie 01

Reference:
Article to be collated

PHOTOGRAPH
NOT
AVAILABLE

CURRACABARK COUNTESS - 31238

CHESTNUT

Sire: CURRACABARK SOLITARE

Dam: princess 05

Reference:
Article to be collated

PHOTOGRAPH
NOT
AVAILABLE

DALL BAR FLYING SHEBA - 53606

CHESTNUT

Sire: flying leaf 02

Dam: tananarive 02

Reference:
Article to be collated

PHOTOGRAPH
NOT
AVAILABLE

DANDILLA MAGETTE - 6927

BROWN

Sire: the magistrate 02

Dam: iranette 02

Reference:
Article to be collated

PHOTOGRAPH
NOT
AVAILABLE

DAWN - 244

CHESTNUT

Sire: batchelors alliance colt 02

Dam: lace 02

Reference:
Article to be collated

PHOTOGRAPH
NOT
AVAILABLE



Australian Stock Horse

FOUNDATION MARES

Registered Australian Stock Horse Mares registered in the first ten years
(Registration Numbers 1 – 65,000) with over 500 registered Australian Stock Horse
descendants within 5 generations.

DINKUM GOLDIE - 54772

CHESTNUT
Sire: eddie barnes 02
Dam: goldie 01

Reference:
Article to be collated

PHOTOGRAPH
NOT
AVAILABLE

DYRAABO MOONLIGHT - 5793

BAY
Sire: gold top 001
Dam: unknown dam

Reference:
Article to be collated

PHOTOGRAPH
NOT
AVAILABLE

ELMWOOD CHAMPAGNE - 4374

BROWN
Sire: ash carr 001
Dam: tuppy 01

Reference:
Article to be collated

PHOTOGRAPH
NOT
AVAILABLE

EULABAH GLEAM - 229

BROWN
Sire: young valais 02
Dam: pony mare 01

Reference: Australian Stock Horse Journal Mar/Apr 2004 - Page 23
http://abri.une.edu.au/online/images/ASHS/229_1.pdf

PHOTOGRAPH
NOT
AVAILABLE

FARNLEIGH TANDI - 31882

BAY
Sire: starveyor 02
Dam: damleigh 02

Reference:
Article to be collated

PHOTOGRAPH
NOT
AVAILABLE



Australian Stock Horse

FOUNDATION MARES

Registered Australian Stock Horse Mares registered in the first ten years
(Registration Numbers 1 – 65,000) with over 500 registered Australian Stock Horse
descendants within 5 generations.

FLADBURY STUD CORN SILK - 779

CHESTNUT
Sire: jester 03
Dam: bolero 02

Reference:
Article to be collated

PHOTOGRAPH
NOT
AVAILABLE

FLADBURY STUD CRISENA - 10142

CHESTNUT
Sire: columnist 02
Dam: clue 02

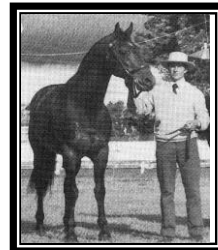
Reference: Australian Stock Horse Journal Nov/Dec 2005 - Page 27
http://abri.une.edu.au/online/images/ASHS/10142_1.pdf

PHOTOGRAPH
NOT
AVAILABLE

FOREST NANCY - 2316

BROWN
Sire: trigger 02
Dam: curio 02

Reference:
Article to be collated



FRECKLES - 453

GREY
Sire: bobbie bruce colt 02
Dam: bignells radiant mare 02

Reference:
Article to be collated

PHOTOGRAPH
NOT
AVAILABLE

GARTHOWEN MISS RIVOLI - 4263

BROWN
Sire: rivoli gift 02
Dam: thoroughbred mare 01

Reference: Australian Stock Horse Journal Mar/Apr 1999 - Page 26
http://abri.une.edu.au/online/images/ASHS/4263_1.pdf

PHOTOGRAPH
NOT
AVAILABLE



Australian Stock Horse

FOUNDATION MARES

Registered Australian Stock Horse Mares registered in the first ten years
(Registration Numbers 1 – 65,000) with over 500 registered Australian Stock Horse
descendants within 5 generations.

GLEN LEE CONNIE - 5122

CHESTNUT
Sire: jackeroo 001
Dam: wynot 01

Reference:
Article to be collated

PHOTOGRAPH
NOT
AVAILABLE

GLENALVON JOYITA - 831

BROWN
Sire: radar 03
Dam: glasonomy 02

Reference:
Article to be collated

PHOTOGRAPH
NOT
AVAILABLE

GLENGARRY ANN - 6407

BAY
Sire: chan 02
Dam: troy 02

Reference: Australian Stock Horse Journal July/Aug 2014 - Page 19
http://abri.une.edu.au/online/images/ASHS/6407_1.pdf



GLENNA - 3543

BROWN
Sire: bright flame 05
Dam: dark nell 03

Reference: Australian Stock Horse Journal July/Aug 2006 - Page 12
http://abri.une.edu.au/online/images/ASHS/3543_1.pdf



GLEN OAK PIVOT - 633

BAY
Sire: fort keil 02
Dam: fay 02

Reference:
Article to be collated

PHOTOGRAPH
NOT
AVAILABLE



Australian Stock Horse

FOUNDATION MARES

Registered Australian Stock Horse Mares registered in the first ten years
(Registration Numbers 1 – 65,000) with over 500 registered Australian Stock Horse
descendants within 5 generations.

GLENROCK JEWEL - 5004

BROWN

Sire: GLENROCK GLENREGO

Dam: tessa 01

Reference:
Article to be collated

PHOTOGRAPH
NOT
AVAILABLE

GLIMPSE - 4414

CHESTNUT

Sire: serenity 02

Dam: memory 05

Reference:
Article to be collated

PHOTOGRAPH
NOT
AVAILABLE

GLORY - 486

BAY

Sire: chan 02

Dam: sundown 03

Reference:
Article to be collated

PHOTOGRAPH
NOT
AVAILABLE

GOONAMURRAH PEGGY - 12648

PALOMINO

Sire: unknown sire

Dam: unknown dam

Reference:
Article to be collated

PHOTOGRAPH
NOT
AVAILABLE

HAYDON PIROUETTE - 6438

BLACK

Sire: bright valais 02

Dam: eulalie 02

Reference:
Article to be collated

PHOTOGRAPH
NOT
AVAILABLE



Australian Stock Horse

FOUNDATION MARES

Registered Australian Stock Horse Mares registered in the first ten years
(Registration Numbers 1 – 65,000) with over 500 registered Australian Stock Horse
descendants within 5 generations.

HUMEWOOD BLUE BOW - 4359

GREY

Sire: placebo 02
Dam: margie buck 02

Reference: Australian Stock Horse Journal Nov/Dec 2006 - Page 9
http://abri.une.edu.au/online/images/ASHS/4359_1.pdf

PHOTOGRAPH
NOT
AVAILABLE

HUNTLY SUNSTREAM - 1461

BAY

Sire: SUNDOWN
Dam: midstream mare 02

Reference:
Article to be collated

PHOTOGRAPH
NOT
AVAILABLE

JIN - 1193

BLACK

Sire: radios 02
Dam: silvius mare 02

Reference:
Article to be collated

PHOTOGRAPH
NOT
AVAILABLE

JUST SNIP - 14614

TAFFY

Sire: radios 02
Dam: taffy 02

Reference:
Article to be collated

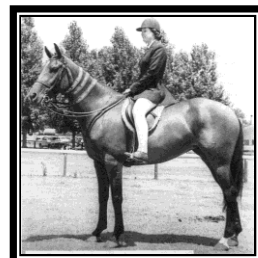
PHOTOGRAPH
NOT
AVAILABLE

KENDALL PATSY - 7640

BAY

Sire: moccono 02
Dam: flash 08

Reference: Australian Stock Horse Journal July/Aug 2009 - Page 6
http://abri.une.edu.au/online/images/ASHS/7640_1.pdf





Australian Stock Horse

FOUNDATION MARES

Registered Australian Stock Horse Mares registered in the first ten years
(Registration Numbers 1 – 65,000) with over 500 registered Australian Stock Horse
descendants within 5 generations.

KIMRIDGE AMANDA - 33648

BLACK
Sire: AL BURACK
Dam: jedda 05

Reference: Australian Stock Horse Journal May/June 2015 - Page 26
http://abri.une.edu.au/online/images/ASHS/33648_1.pdf

PHOTOGRAPH
NOT
AVAILABLE

KIRKBYS STORM GLORY - 10638

CHESTNUT
Sire: storm warning 02
Dam: glen prairie glory 02

Reference: Australian Stock Horse Journal Sept/Oct 2011 - Page 10
http://abri.une.edu.au/online/images/ASHS/10638_1.pdf



KOYUNA FELICITY - 14688

CHESTNUT
Sire: nestor 02
Dam: philesia 02

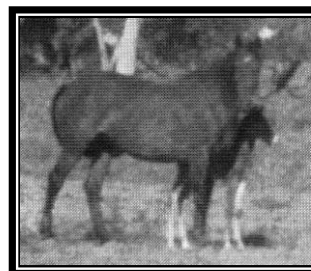
Reference:
Article to be collated

PHOTOGRAPH
NOT
AVAILABLE

KRUETTE - 990

BAY
Sire: whistle 02
Dam: corkscrew 02

Reference: Australian Stock Horse Journal May/June 1999 - Page 16
http://abri.une.edu.au/online/images/ASHS/990_1.pdf



KYABRA LADY KAREENA - 14099

BROWN
Sire: NEVER IN DOUBT
Dam: tara lee 02

Reference:
Article to be collated

PHOTOGRAPH
NOT
AVAILABLE



Australian Stock Horse

FOUNDATION MARES

Registered Australian Stock Horse Mares registered in the first ten years
(Registration Numbers 1 – 65,000) with over 500 registered Australian Stock Horse
descendants within 5 generations.

LADY CHAN - 5593

BROWN

Sire: chan 02

Dam: meredith mare 01

Reference: Australian Stock Horse Journal Sept/Oct 2014 – Page 10
http://abri.une.edu.au/online/images/ASHS/5593_1.pdf

PHOTOGRAPH
NOT
AVAILABLE

LADY RADIANT - 1629

GREY

Sire: bignells radiant 02

Dam: bonnie 23

Reference: Australian Stock Horse Journal Mar/Apr 1999 - Page 24
http://abri.une.edu.au/online/images/ASHS/1629_1.pdf

PHOTOGRAPH
NOT
AVAILABLE

LARA - 2020

BROWN

Sire: commandant 02

Dam: volette 02

Reference:
Article to be collated

PHOTOGRAPH
NOT
AVAILABLE

LILY II - 360

BAY

Sire: tomahawk 02

Dam: radium bred mare 02

Reference:
Article to be collated

PHOTOGRAPH
NOT
AVAILABLE

LINDY LOU - 2076

BAY

Sire: flying gilt 02

Dam: unknown dam

Reference:
Article to be collated

PHOTOGRAPH
NOT
AVAILABLE



Australian Stock Horse

FOUNDATION MARES

Registered Australian Stock Horse Mares registered in the first ten years
(Registration Numbers 1 – 65,000) with over 500 registered Australian Stock Horse
descendants within 5 generations.

LINGI PERFECTION - 30604

BAY

Sire: double buzz 02

Dam: judy 01

Reference:
Article to be collated

PHOTOGRAPH
NOT
AVAILABLE

LITTLE DOVE - 5030

BROWN

Sire: tomahawk 02

Dam: kunderang station mare 01

Reference:
Article to be collated

PHOTOGRAPH
NOT
AVAILABLE

LITTLE MAY - 695

CHESTNUT

Sire: foster 02

Dam: lyncourt 02

Reference: Australian Stock Horse Journal Jan/Feb 2007 - Page 9
http://abri.une.edu.au/online/images/ASHS/695_1.pdf

PHOTOGRAPH
NOT
AVAILABLE

LITTLE SIS - 13106

BROWN

Sire: tatyoon 02

Dam: regime 01

Reference:
Article to be collated

PHOTOGRAPH
NOT
AVAILABLE

MACMILLANS DONNA - 1654

CHESTNUT

Sire: gentle prince colt 02

Dam: cooltrim 02

Reference:
Article to be collated

PHOTOGRAPH
NOT
AVAILABLE



Australian Stock Horse

FOUNDATION MARES

Registered Australian Stock Horse Mares registered in the first ten years
(Registration Numbers 1 – 65,000) with over 500 registered Australian Stock Horse
descendants within 5 generations.

MAIN CREEK SPOT - 15386

BAY
Sire: glen ray 02
Dam: medalist bred mare 02

Reference:
Article to be collated

PHOTOGRAPH
NOT
AVAILABLE

MARGE - 362

CHESTNUT
Sire: benghazi 02
Dam: unknown dam

Reference:
Article to be collated

PHOTOGRAPH
NOT
AVAILABLE

MCGHEES LIBERTY BELLE - 26792

BROWN
Sire: ABBEY
Dam: liberty 02

Reference:
Article to be collated

PHOTOGRAPH
NOT
AVAILABLE

MERRY LEA - 5566

BROWN
Sire: merry scout 02
Dam: unknown dam

Reference:
Article to be collated

PHOTOGRAPH
NOT
AVAILABLE

MISS LYNLAND – 16517

CHESTNUT
Sire: SAGE KING
Dam: the rearing mare 02

Reference: Australian Stock Horse Journal Jan/Feb 2015 – Page 14
http://abri.une.edu.au/online/images/ASHS/16517_1.pdf





Australian Stock Horse

FOUNDATION MARES

Registered Australian Stock Horse Mares registered in the first ten years
(Registration Numbers 1 – 65,000) with over 500 registered Australian Stock Horse
descendants within 5 generations.

MISS WEDGEWOOD - 9514

CHESTNUT
Sire: sovereign 11
Dam: bill wedgewood mare 03

Reference:
Article to be collated

PHOTOGRAPH
NOT
AVAILABLE

MY CHANCE - 189

BROWN
Sire: chan 02
Dam: nabinabah bred mare 02

Reference: Australian Stock Horse Journal Nov/Dec 2009 - Page16
http://abri.une.edu.au/online/images/ASHS/189_1.pdf



MYRA JANE - 2119

CHESTNUT
Sire: steel dust 02
Dam: janie 02

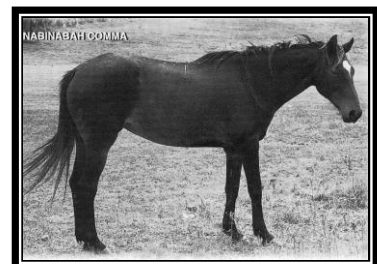
Reference: Australian Stock Horse Journal Sept/Oct 2009 - Page 8
http://abri.une.edu.au/online/images/ASHS/2119_1.pdf

PHOTOGRAPH
NOT
AVAILABLE

NABINABAH COMMA - 410

BROWN
Sire: MUSTER
Dam: calm 02

Reference: Australian Stock Horse Journal Jan/Feb 2001 - Page 8
http://abri.une.edu.au/online/images/ASHS/410_1.pdf



NABINABAH GENTLE - 415

CHESTNUT
Sire: cool bruce 02
Dam: serene 02

Reference:
Article to be collated

PHOTOGRAPH
NOT
AVAILABLE



Australian Stock Horse

FOUNDATION MARES

Registered Australian Stock Horse Mares registered in the first ten years
(Registration Numbers 1 – 65,000) with over 500 registered Australian Stock Horse
descendants within 5 generations.

NABINABAH SUNSET - 417

CHESTNUT

Sire: BAMBOROUGH GEMBACOLLIE

Dam: serene 02

Reference:
Article to be collated

PHOTOGRAPH
NOT
AVAILABLE

NABINABAH WREN - 407

BLACK

Sire: the lizard 03

Dam: throsby 02

Reference:
Article to be collated

PHOTOGRAPH
NOT
AVAILABLE

OME0 MISTY - 7829

GREY

Sire: wanderer 02

Dam: bluey 10

Reference:
Article to be collated

PHOTOGRAPH
NOT
AVAILABLE

PACK MARE - 367

BAY

Sire: tomahawk 02

Dam: radium bred mare 02

Reference: Australian Stock Horse Journal Nov/Dec 2010 - Page 14
http://abri.une.edu.au/online/images/ASHS/367_1.pdf



PALMERS SISSY - 21586

BAY

Sire: fort keil 02

Dam: birdie 02

Reference: Australian Stock Horse Journal May/June 2007 - Page 9
http://abri.une.edu.au/online/images/ASHS/21586_1.pdf

PHOTOGRAPH
NOT
AVAILABLE



Australian Stock Horse

FOUNDATION MARES

Registered Australian Stock Horse Mares registered in the first ten years
(Registration Numbers 1 – 65,000) with over 500 registered Australian Stock Horse
descendants within 5 generations.

PIOBMOR SUSIE - 4344

DUN

Sire: bruce wood 02
Dam: dempsy mare 02

Reference:
Article to be collated

PHOTOGRAPH
NOT
AVAILABLE

RADIETTE - 86

BAY

Sire: bignells radiant 02
Dam: echos sister 02

Reference: Australian Stock Horse Journal Mar/Apr 2015 – Page 16
http://abri.une.edu.au/online/images/ASHS/86_1.pdf



RAMBLERS MARNIE - 60423

BAY

Sire: ferrys rambler 02
Dam: freckles 04

Reference:
Article to be collated

PHOTOGRAPH
NOT
AVAILABLE

RED ROCK DOLL DANCE III - 17749

GREY

Sire: buddy 001
Dam: doll dance ii 02

Reference:
Article to be collated

PHOTOGRAPH
NOT
AVAILABLE

ROSEBROOK CEDAR - 1722

BAY

Sire: chan 02
Dam: melody 08

Reference: Australian Stock Horse Journal July/Aug 1999 - Page 14
http://abri.une.edu.au/online/images/ASHS/1722_1.pdf

PHOTOGRAPH
NOT
AVAILABLE



Australian Stock Horse

FOUNDATION MARES

Registered Australian Stock Horse Mares registered in the first ten years
(Registration Numbers 1 – 65,000) with over 500 registered Australian Stock Horse
descendants within 5 generations.

ROSEBROOK CINNAMON - 1725

BAY

Sire: commanchee 02
Dam: dot 28

Reference:
Article to be collated

PHOTOGRAPH
NOT
AVAILABLE

ROSEBROOK MARQUSETTE - 2736

CHESTNUT

Sire: quarter spade 02
Dam: lisa 02

Reference:
Article to be collated

PHOTOGRAPH
NOT
AVAILABLE

RUMBELS ALMA - 15389

BROWN

Sire: bignells radiant 02
Dam: bonnot 02

Reference: Australian Stock Horse Journal Mar/Apr 2013 - Page 16
http://abri.une.edu.au/online/images/ASHS/15389_1.pdf

PHOTOGRAPH
NOT
AVAILABLE

RYANS FOUR EX - 60999

BLACK

Sire: ABBEY
Dam: mystery 05

Reference: Australian Stock Horse Journal Jan/Feb 2010 - Page 6
http://abri.une.edu.au/online/images/ASHS/60999_1.pdf

PHOTOGRAPH
NOT
AVAILABLE

SA MILLERS SISTER - 2117

CHESTNUT

Sire: aureo colt 02
Dam: bruce mare 02

Reference:
Article to be collated

PHOTOGRAPH
NOT
AVAILABLE



Australian Stock Horse

FOUNDATION MARES

Registered Australian Stock Horse Mares registered in the first ten years
(Registration Numbers 1 – 65,000) with over 500 registered Australian Stock Horse
descendants within 5 generations.

SCRUMLO BRANGA PRUDENCE - 51

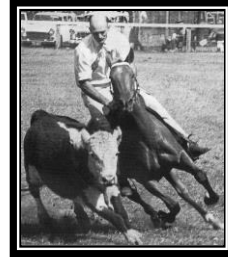
BAY

Sire: tinagroo skibo radium 02

Dam: gay dawn 02

Reference: Australian Stock Horse Journal May/June 1999 - Page 14

http://abri.une.edu.au/online/images/ASHS/51_1.pdf



SCRUMLO MYSTERY - 57

CHESTNUT

Sire: tinagroo skibo radium 02

Dam: judy 04

Reference: Australian Stock Horse Journal July/Aug 1999 - Page 18

http://abri.une.edu.au/online/images/ASHS/57_1.pdf

PHOTOGRAPH
NOT
AVAILABLE

SCRUMLO NITA - 65

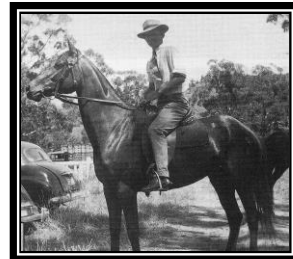
BAY

Sire: tranquil 02

Dam: swanie 02

Reference: Australian Stock Horse Journal Mar/Apr 1999 - Page 22

http://abri.une.edu.au/online/images/ASHS/65_1.pdf



SCRUMLO RITA - 58

PALOMINO

Sire: tranquil 02

Dam: helen 02

Reference: Australian Stock Horse Journal Nov/Dec 2014 – Page 16

http://abri.une.edu.au/online/images/ASHS/58_1.pdf

PHOTOGRAPH
NOT
AVAILABLE

SCRUMLO VICTORIA - 1448

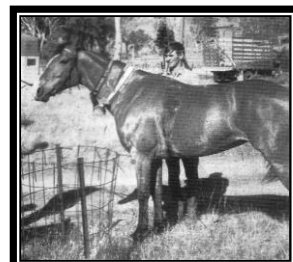
BAY

Sire: bobbie bruce 02

Dam: flame 02

Reference: Australian Stock Horse Journal May/June 1999 - Page 18

http://abri.une.edu.au/online/images/ASHS/1448_1.pdf





Australian Stock Horse

FOUNDATION MARES

Registered Australian Stock Horse Mares registered in the first ten years
(Registration Numbers 1 – 65,000) with over 500 registered Australian Stock Horse
descendants within 5 generations.

SEVENTY SEVEN SUSIE - 43959

BAY

Sire: snow star colt 02
Dam: bobbie bruce mare 02

Reference:
Article to be collated

PHOTOGRAPH
NOT
AVAILABLE

SISTER MONTY - 3542

BLACK

Sire: starlight 06
Dam: black opal 02

Reference: Australian Stock Horse Journal Nov/Dec 1999 - Page 12
http://abri.une.edu.au/online/images/ASHS/3542_1.pdf

PHOTOGRAPH
NOT
AVAILABLE

SMITHS STAR - 7145

BAY

Sire: MYRA BRONZE
Dam: biddy 03

Reference:
Article to be collated

PHOTOGRAPH
NOT
AVAILABLE

SNOW WHITE - 368

PALOMINO

Sire: benghazi 02
Dam: comara queenie 01

Reference: Australian Stock Horse Journal Sept/Oct 2010 - Page 8
http://abri.une.edu.au/online/images/ASHS/368_1.pdf

PHOTOGRAPH
NOT
AVAILABLE

STANTON STUD HENRY - 13

BAY

Sire: cadilly 02
Dam: eclipse mare 02

Reference: Australian Stock Horse Journal July/Aug 2002 - Page 32
http://abri.une.edu.au/online/images/ASHS/13_1.pdf

PHOTOGRAPH
NOT
AVAILABLE



Australian Stock Horse

FOUNDATION MARES

Registered Australian Stock Horse Mares registered in the first ten years (Registration Numbers 1 – 65,000) with over 500 registered Australian Stock Horse descendants within 5 generations.

STANTON STUD JAN - 1650

BROWN
Sire: chan 02
Dam: neita 02

Reference: Australian Stock Horse Journal July/Aug 2007 - Page 6
http://abri.une.edu.au/online/images/ASHS/1650_1.pdf

PHOTOGRAPH
NOT
AVAILABLE

STANTON STUD KATEY BAR - 4495

BROWN
Sire: bareye 02
Dam: unknown dam

Reference: Australian Stock Horse Journal Sept/Oct 2017 - Page 10
http://abri.une.edu.au/online/images/ASHS/4495_1.pdf

PHOTOGRAPH
NOT
AVAILABLE

STANTON STUD MERRIMBA - 1653

CHESTNUT
Sire: midlake 02
Dam: lanjon 02

Reference:
Article to be collated

PHOTOGRAPH
NOT
AVAILABLE

STANTON STUD SAUCER - 5

BROWN
Sire: bobbie bruce 02
Dam: unknown dam

Reference: Australian Stock Horse Journal Sept/Oct 2001 - Page 18
http://abri.une.edu.au/online/images/ASHS/5_1.pdf



STANTON STUD TARA - 7

BROWN
Sire: radiums call 02
Dam: radium mare 02

Reference: Australian Stock Horse Journal Mar/Apr 2017 - Page 16
http://abri.une.edu.au/online/images/ASHS/7_1.pdf





Australian Stock Horse

FOUNDATION MARES

Registered Australian Stock Horse Mares registered in the first ten years
(Registration Numbers 1 – 65,000) with over 500 registered Australian Stock Horse
descendants within 5 generations.

TAMARANG DOCS DELLENA - 50160

CHESTNUT
Sire: docs poco bar 02
Dam: tamarang dellena 02

Reference:
Article to be collated

PHOTOGRAPH
NOT
AVAILABLE

TANIA - 365

BAY
Sire: germons rayon 02
Dam: jack coombes mare 01

Reference: Australian Stock Horse Journal Mar/Apr 2007 - Page 9
http://abri.une.edu.au/online/images/ASHS/365_1.pdf

PHOTOGRAPH
NOT
AVAILABLE

TARA - 3563

GREY
Sire: sensation 02
Dam: unknown dam

Reference: Australian Stock Horse Journal Nov/Dec 2007 - Page 6
http://abri.une.edu.au/online/images/ASHS/3563_1.pdf



TARWARRI LINDY - 1130

BROWN/BLACK
Sire: mountain eagle colt 02
Dam: cindy 17

Reference:
Article to be collated

PHOTOGRAPH
NOT
AVAILABLE

TERLINGS SPARKLE - 124

GREY
Sire: royal commission 02
Dam: bambi 04

Reference:
Article to be collated

PHOTOGRAPH
NOT
AVAILABLE



Australian Stock Horse

FOUNDATION MARES

Registered Australian Stock Horse Mares registered in the first ten years
(Registration Numbers 1 – 65,000) with over 500 registered Australian Stock Horse
descendants within 5 generations.

TILLY - 5458

GREY

Sire: leo grey 02

Dam: dauntless lass 02

Reference:
Article to be collated

PHOTOGRAPH
NOT
AVAILABLE

TIMOR SHIRALEE - 2968

BROWN

Sire: WALLAROO

Dam: star 08

Reference:
Article to be collated

PHOTOGRAPH
NOT
AVAILABLE

TINAGROO MERSA - 1066

BAY

Sire: panzer 02

Dam: ranmena 02

Reference:
Article to be collated

PHOTOGRAPH
NOT
AVAILABLE

TOOMBA TWILIGHT - 4608

BAY

Sire: bexley 03

Dam: nightie 02

Reference:
Article to be collated

PHOTOGRAPH
NOT
AVAILABLE

TURANVILLE DIANE - 18468

CHESTNUT

Sire: chan 02

Dam: mareetha 01

Reference:
Article to be collated

PHOTOGRAPH
NOT
AVAILABLE



Australian Stock Horse

FOUNDATION MARES

Registered Australian Stock Horse Mares registered in the first ten years
(Registration Numbers 1 – 65,000) with over 500 registered Australian Stock Horse
descendants within 5 generations.

VALENTINE STUD BREEZE - 759

BAY

Sire: wisemantles ken radium 02

Dam: tony mare 03

Reference:
Article to be collated

PHOTOGRAPH
NOT
AVAILABLE

VALETTA - 600

BAY

Sire: fort keil 02

Dam: fay 02

Reference:
Article to be collated

PHOTOGRAPH
NOT
AVAILABLE

VALETTE - 7329

BAY/BROWN

Sire: radiums last 02

Dam: val 04

Reference:
Article to be collated

PHOTOGRAPH
NOT
AVAILABLE

VARA - 1923

CHESTNUT

Sire: unknown sire

Dam: comic court mare 02

Reference:
Article to be collated

PHOTOGRAPH
NOT
AVAILABLE

VOLLETTE - 1778

CHESTNUT

Sire: commandant 02

Dam: volette 02

Reference:
Article to be collated

PHOTOGRAPH
NOT
AVAILABLE



Australian Stock Horse

FOUNDATION MARES

Registered Australian Stock Horse Mares registered in the first ten years
(Registration Numbers 1 – 65,000) with over 500 registered Australian Stock Horse
descendants within 5 generations.

WAIKON PARK TALIA - 12219

PALOMINO
Sire: unknown sire
Dam: scumlo station mare 01

Reference:
Article to be collated

PHOTOGRAPH
NOT
AVAILABLE

WARINGA VAL - 18635

BAY
Sire: young valais colt 02
Dam: miss promise 01

Reference:
Article to be collated

PHOTOGRAPH
NOT
AVAILABLE

YALLATUP SELENA - 23412

CHESTNUT
Sire: pescador 02
Dam: fidget 01

Reference:
Article to be collated

PHOTOGRAPH
NOT
AVAILABLE

YARRAMINE GIFT - 3275

GREY
Sire: silver thread 04
Dam: ekw station mare 01

Reference:
Article to be collated

PHOTOGRAPH
NOT
AVAILABLE

YARRANOO BANGLES - 3540

BROWN
Sire: young valais 02
Dam: wongle i 02

Reference: Australian Stock Horse Journal Sept/Oct 1999 – Page 18
http://abri.une.edu.au/online/images/ASHS/3540_1.pdf

PHOTOGRAPH
NOT
AVAILABLE



Australian Stock Horse

FOUNDATION MARES

Registered Australian Stock Horse Mares registered in the first ten years
(Registration Numbers 1 – 65,000) with over 500 registered Australian Stock Horse
descendants within 5 generations.

YARRAWA SUNSET - 21102

CHESTNUT
Sire: SUNDOWN
Dam: unknown dam

Reference:
Article to be collated

PHOTOGRAPH
NOT
AVAILABLE
